

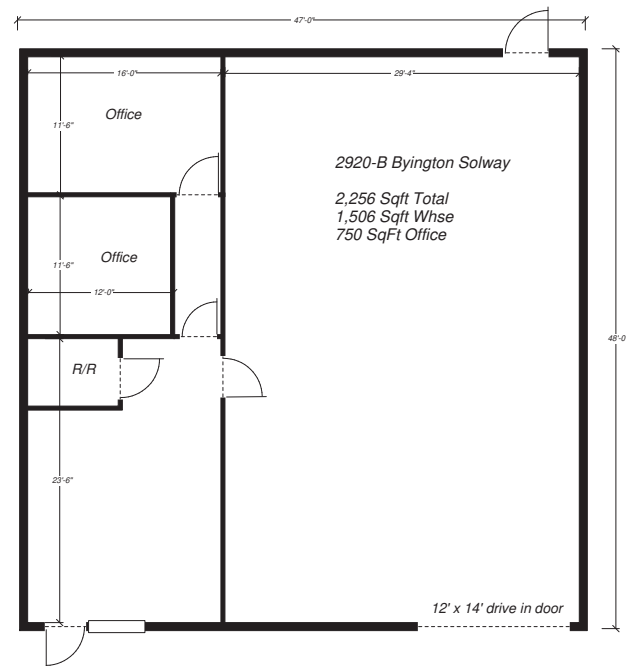
FOR LEASE

2,256 sf Office / Warehouse in West Knoxville

2920-B Byington Solway Road, Knoxville, TN 37931



2,256sf Total Space • 750sf Office Space
16' Eaves • 12' x 14' Drive-in Door
Clear Span • Zoned Light Industrial
3 Phase Electric, 120/208 Volts, 200 Amp
Modified Gross Lease



Furrow • Strickland
REAL ESTATE SERVICES

Contact Rob Strickland
865.521.7500 • rob@furrow.com

www.furrowstrickland.com • TN Firm#256605
10319 Cogdill Road, Knoxville, TN